



# The Super Extended Rolltop

## Information & Specifications



(model SXEXT-II)

The HSA Super Extended Rolltops give you a convenient way to house and protect a wide variety of 19" rack mount and non-rackmount electronic equipment. Very suitable for boardroom, Houses of Worship, educational, corporate, recording and other professional environments, the HSA Super Extended Rolltops are an elegant and easy way to aesthetically blend audio, video and many other electronic systems into their surroundings.

**Materials & Assembly:** Super Extended Rolltops are handcrafted from a selection of engineered core and multi-core panels with premium Red Oak faces for high dimensional integrity, consistency and strength. Extra thick contour edging is used to match the oak or other optional/custom wood species or high pressure laminates.

**Table Top:** The 68" wide table surface is at 25.75" height for comfortable operation of mixing consoles, computers, switchers, keyboards, recording equipment, etc. In addition to a 3.125" clearance between the table rear and tambour path, wiring grommets are provided at the table rear for additional wire management. The material and construction of the table (and desk) enables easy on-site solutions to cable dressing/harnessing and special equipment/panel mounting needs.

**Lower Racks:** The dual (left & right undermounted) 10 space extra deep industry standard racks are designed to accept deep chassis power amplifiers and process electronics. We use heavy-duty steel rails with extra half-rack tapped screw holes to allow for a wide variety of equipment spacing. A 1.50" clearance is given between the rack rails and tambour doors for space for knobs and handles and to assist with ventilation (see notes on lock clearance exceptions). Rear clearance is maintained since the tambour door stops before reaching the rear even when fully open. The rolltop tambour rack doors are secured with flush-mount brass cabinet locks keyed alike to the main rolltop tambour door lock. Additional ventilation and the cable access

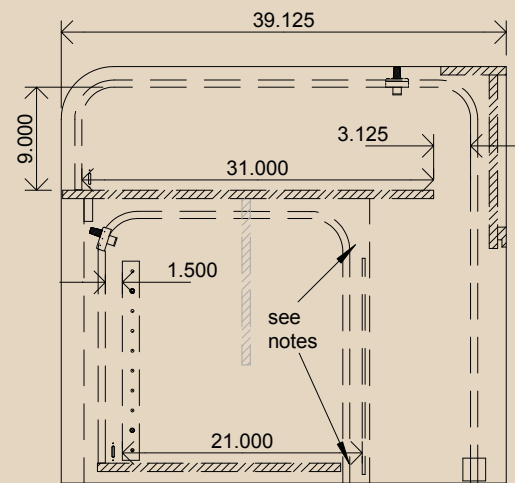
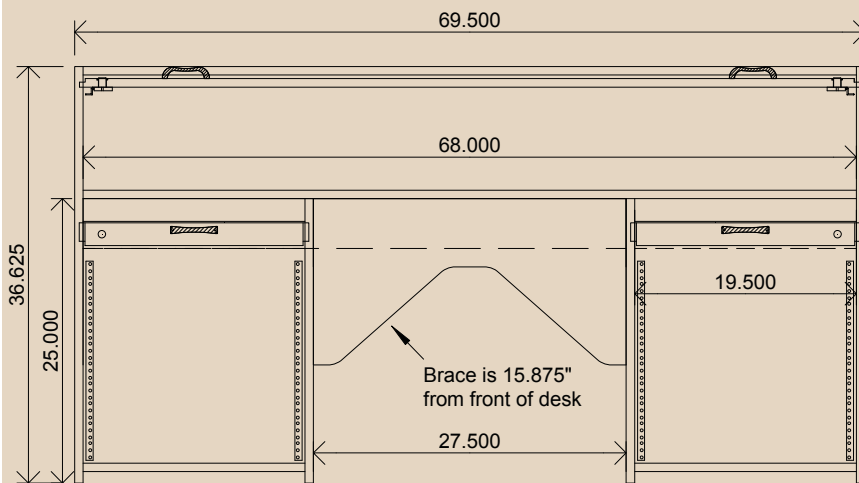
- ▶ The most beautiful & functional solution for housing electronic systems
- ▶ Dual 10 space lower racks
- ▶ Extra width & depth
- ▶ Low profile, less than 37" high overall
- ▶ Both Upper & Lower rolltop tambour doors lock
- ▶ Solidly & carefully crafted
- ▶ With a variety of finishes

ways are found at both the top and bottom of the rear of each rack. The racks have a finished, removable rear panel for security and aesthetics.

**Rolltop Tambours:** We hand build our own rolltop tambour doors to assure quality and extra strength. The 1.5" by 1/2" thick tambours are lead by a 2" wide by 3/4" thick lead tambour for extra strength at the locks and polished brass handles. The thicker profile results in a very smooth operation that can be maintained with an occasional application of ordinary wax. Flush mounted cabinet locks on the lead tambours engage into the sidewalls, securing the rolltop tambour doors without getting in the way.

**Finish:** A variety of stain colors are available with our popular and environmentally friendly waterborne finishing system. These advanced waterborne stains, sealers and finish coats produce a beautiful grain pattern and depth of color. They maintain the natural feel of the wood yet offer some of the best protection from abrasion and spills and keep looking great with minimal upkeep. Actual color samples are available to help you make your selection.

**Other Super Extended Rolltop Benefits:** The Super Extended Rolltop offers additional safety and security by organizing equipment and wiring which, in modern open installations, could be a source of many problems. Being able to "lock-down" the system prevents unauthorized tampering with equipment and wiring between uses. Furthermore, the HSA Super Extended Rolltops (and our other fine wood furnishings) conveys an image of professionalism and quality, presenting your audio, video, lighting or any electronic system in the very best way and as a matching, integral part of its environment.



Left image of the Super Extended Rolltop shows both main and undermounted rack rolltop tambour doors opened (main rolltop descends and covers lower rear when opened). Right image of desk rear shows both undermounted rack's rear removeable panels in place and desk rear. All exposed surfaces fully finished.

**The Super Extended Rolltop is available with the following options/customizations:**

- |          |  |
|----------|--|
| ACCCUS   | RTCUS/SXT Removable Rear Accessway                               |
| MODCUS   | Modesty Panel for Super Extended or Rolltop Custom               |
| PLUS4    | 4" extra table to tambour clearance for low profile desks        |
| RBCUS    | RollBase for Super Extended or Rolltop Custom w/Standard Casters |
| RBCUS-HD | RollBase for SXEXT or RTCUS w/4" Heavy Duty Casters              |
| DUALFAN  | Dual, ATM quiet fan system (with temperature sensor)             |
| GLIDER   | Slide-out angled rack inside lower rack(s)                       |
| VIDEOBAY | Recess in Desk for Video Monitors                                |
| RACKCTR  | Use Single, Centered Rack on larger desks                        |
| HDWESILV | Satin/Silver finish hardware                                     |

Contact your dealer or HSA directly or visit our website at [www.hsarolltops.com](http://www.hsarolltops.com)

**Drawing Notes:** The maximum usable depth (front to back) for equipment is considered approximately 31.000 inches and the maximum height is 9.000 inches under the main rolltop tambour. The maximum height is somewhat less near the front edge where the tambour curves downward. The undermounted rack floors and rear panel lower edges are offset from the floor 1" and there is also a 1" gap at the top and bottom inside of the rear panels for wiring runs. There is a 1.5" clearance between the backside of each lower racks tambour door and the front surface of the rack rail. This clearance is adequate for most applications but be sure to measure equipment to be installed for all clearances to be positive. Additionally, a small amount of this clearance (and the table top tambour clearance also) is taken by the lock assemblies. They are approximately 0.5" thick out to about 2.750" from the sidewalls and about 0.75" thick within about 0.875" of the sidewalls. Although you can be sure that Standard 19" rack mount equipment will mount across our rack rails, wood is a natural product and overall working tolerances can be in the range of +/- 0.25" normally.

**WARRANTY:** HSA warrants standard products for a period of one year and covers defects in materials and workmanship. Wood is a natural material and every piece is unique. Deviations in the final products from each other or samples in finish, color, contrast, density and pattern are to be expected and is part of the beauty and appeal in wood products and are not considered defects under our warranty. The warranty does not cover improper installation or use of HSA products. The warranty also does not cover appearance or appearance items, finish items or any malfunctions caused by misuse or improper operation. HSA's liability does not include any consequential or resulting damage to person, property, equipment, goods, merchandise, profits, goodwill, or reputation arising out of any defect in or failure of product. HSA expressly disclaims warranty for a particular purpose and only designs and manufactures product according to dimensions furnished by the buyer or as stated in literature, website publication or drawings by HSA (which are subject to change without notice). HSA does not guarantee that another manufacturer's piece or pieces of equipment will fit into one of our designs or products as HSA does not exercise control over the sizes, arrangement, wiring or application of the other manufacturer's products or the end-user's operating preferences. Therefore the determination of whether or not equipment or a system will properly fit into an HSA product is a decision resting solely on the buyer prior to purchase. Warranty items will be repaired or replaced at our option without charge for materials or labor, provided such items are returned for inspection, transportation prepaid, to HSA, Inc., Mishawaka, IN.

Product specifications, availability and cost subject to change without notice.

Super Extended Rolltop (SXEXT-II) © 1990-2015 by HSA, Inc